



RAFFLES

RESIDENCES & PENTHOUSES
THE PALM DUBAI





RAFFLES

RESIDENCES & PENTHOUSES
THE PALM DUBAI

PENTHOUSE

1

Penthouse 1

A luxury palatial penthouse in an exclusive Palm Jumeirah beach resort. A home where everyday living is truly exceptional.

Imagine the peace and serenity of sublime living spaces thoughtfully planned and meticulously designed to meet your personal lifestyle needs.

This exceptional five-bedroom penthouse with four living spaces exudes sophistication, enhanced by elegant interiors and high-end furnishings.

Covering three floors with a total floor area of 1,121m² and a stunning 1,213m² of terrace space.

With an intelligent design approach to meet your lifestyle needs, enjoy the serenity of your own office as you work, or simply have some time away for the business of life.

PENTHOUSE 1 TOTAL AREA

Indoor Living	1,122m ²
Outdoor Living	1,213m ²
TOTAL	2,335m² / 25,133ft²



Penthouse 1 location





Opulence every day

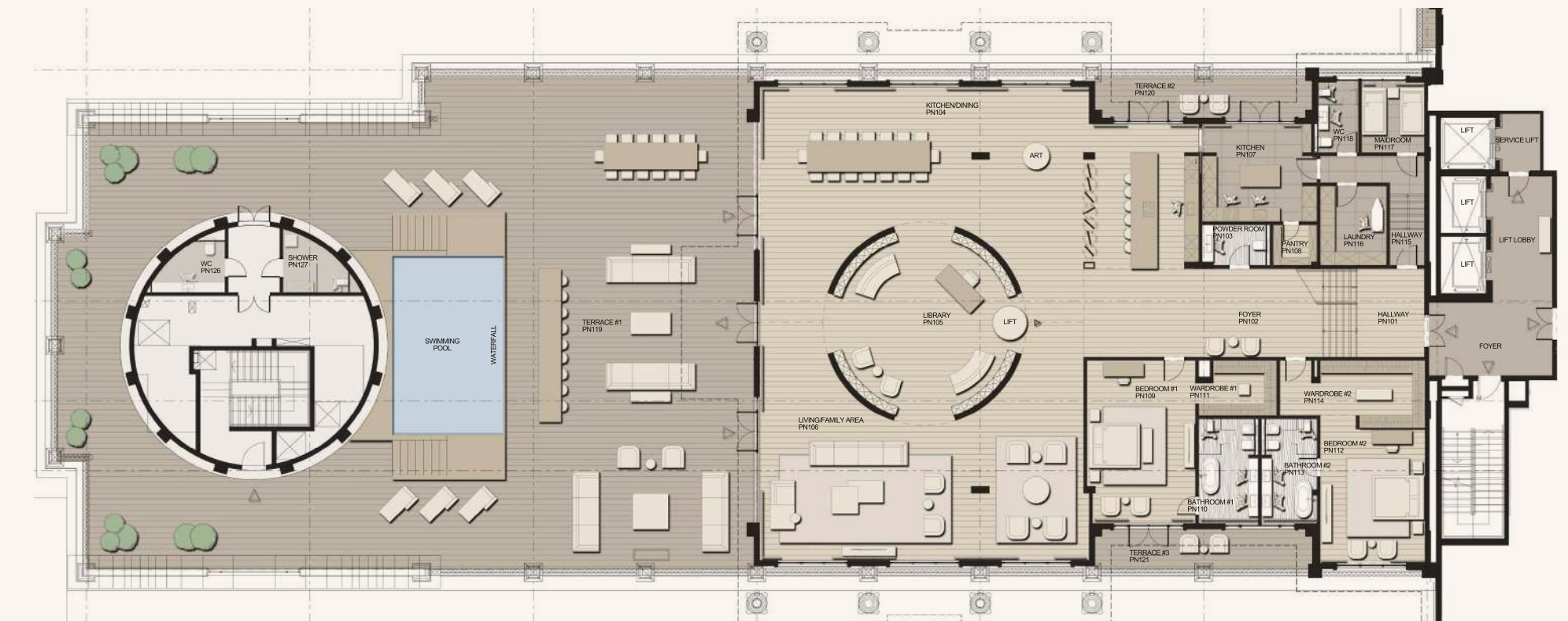
The luxurious open-plan living and dining area flows seamlessly onto a magnificent 601m² private terrace. Here you'll find a stunning waterfall swimming pool with shower facilities, seating area and breath-taking views.

The stunning centrepiece glass lift takes you up to the other floors from the circular library area. The 6th floor also features a well appointed kitchen area, guest powder room, maid quarters and two luxurious bedrooms with fully featured en-suites and walk-in wardrobes.

6TH FLOOR AREA

Indoor Living	635m ²
Outdoor Living	601m ²
TOTAL	1,236m² / 13,299ft²

Penthouse 1 / 6th Floor





A private world of pleasure

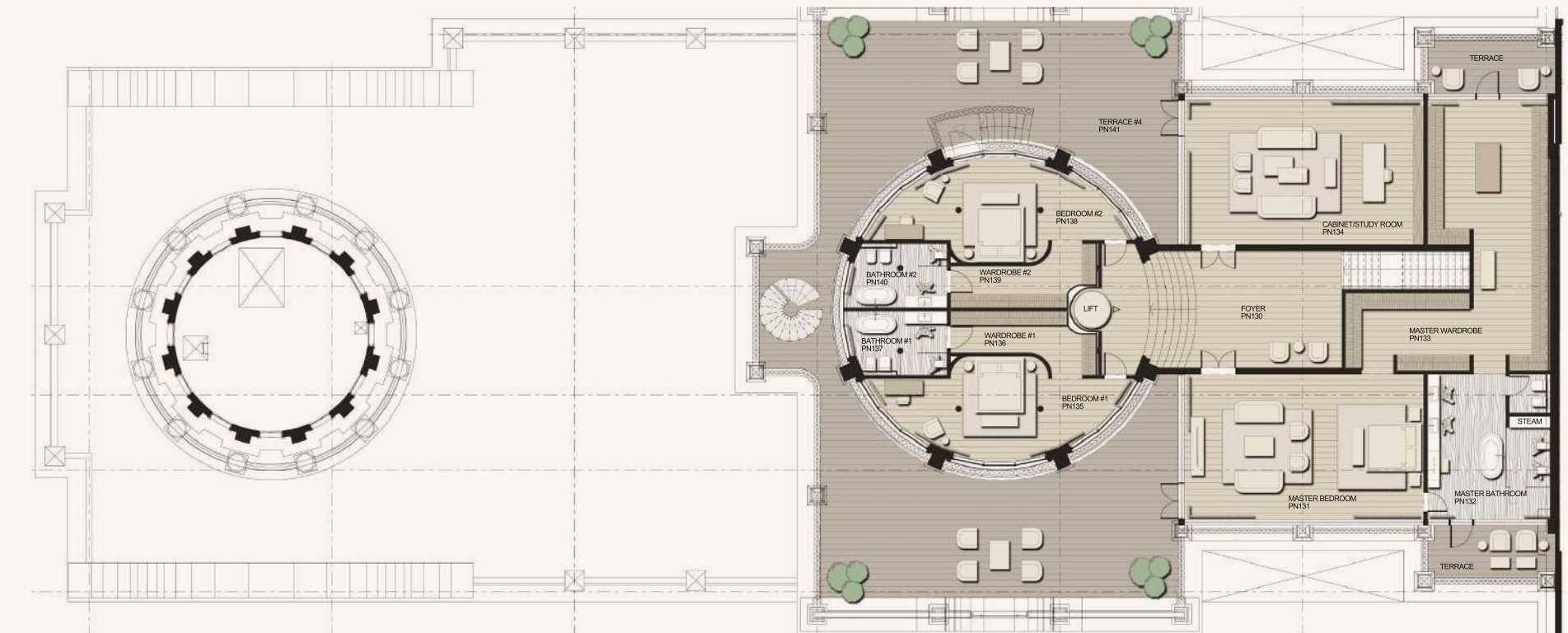
On the 7th floor, you can appreciate the splendour of the magnificent master bedroom suite, featuring his and hers walk-in wardrobes and an en-suite bathroom.

Family or guests can enjoy the wonderfully proportioned two additional bedrooms enveloped by a 281m² balcony, each with en-suite, which provides privacy and feels like luxury.

7TH FLOOR AREA

Indoor Living	406m ²
Outdoor Living	281m ²
TOTAL	687m² / 7,397ft²

Penthouse 1 / 7th Floor





Where dreams come true

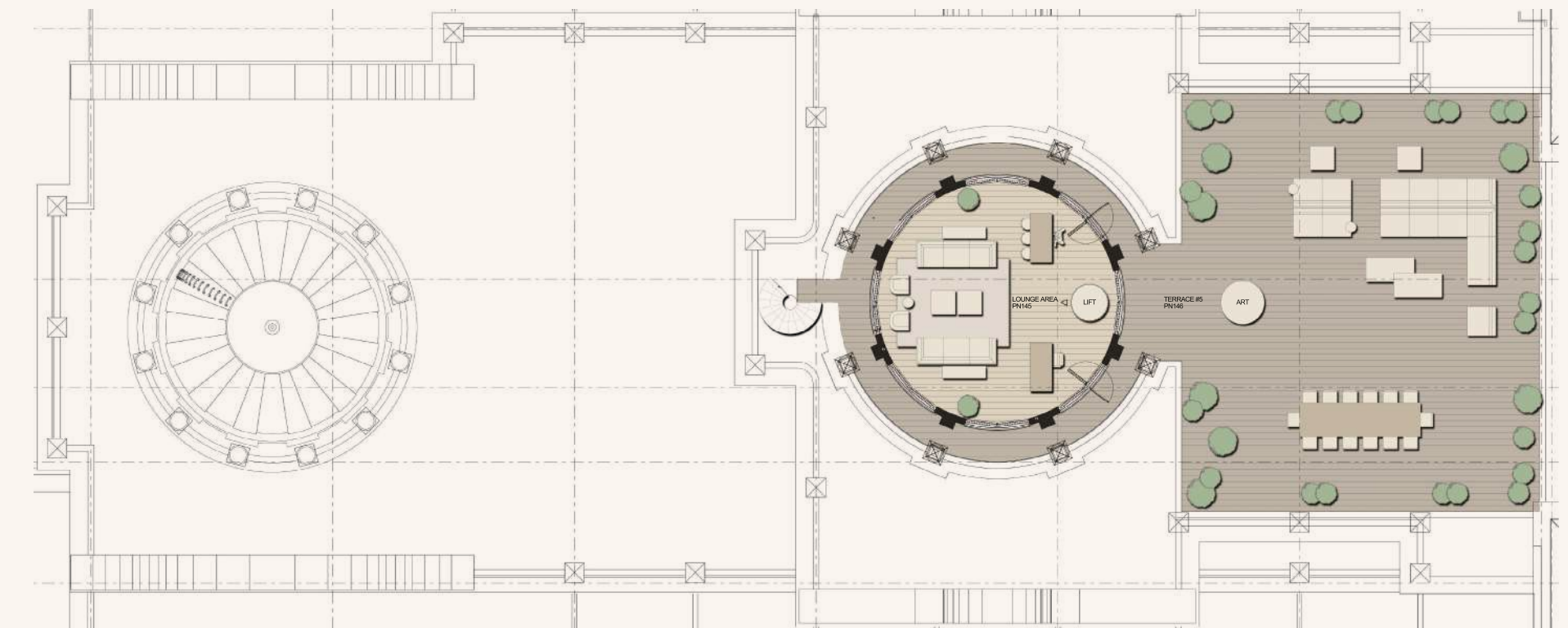
The luxurious 81m² open-plan 8th floor living area, enhanced by extra-large curved windows that open out onto a magnificent 331m² private terrace.

From here you'll find a stunning seating and dining area with views across the Arabian gulf and the city of Dubai.

8TH FLOOR AREA

Indoor Living	81m ²
Outdoor Living	332m ²
TOTAL	413m² / 4,437ft²

Penthouse 1 / 8th Floor





RAFFLES

RESIDENCES & PENTHOUSES
THE PALM DUBAI

PENTHOUSE

2

Penthouse 2

An exclusive waterfront penthouse in an iconic Palm Jumeirah beach resort. A space not created by architects and craftsmen, but by genius.

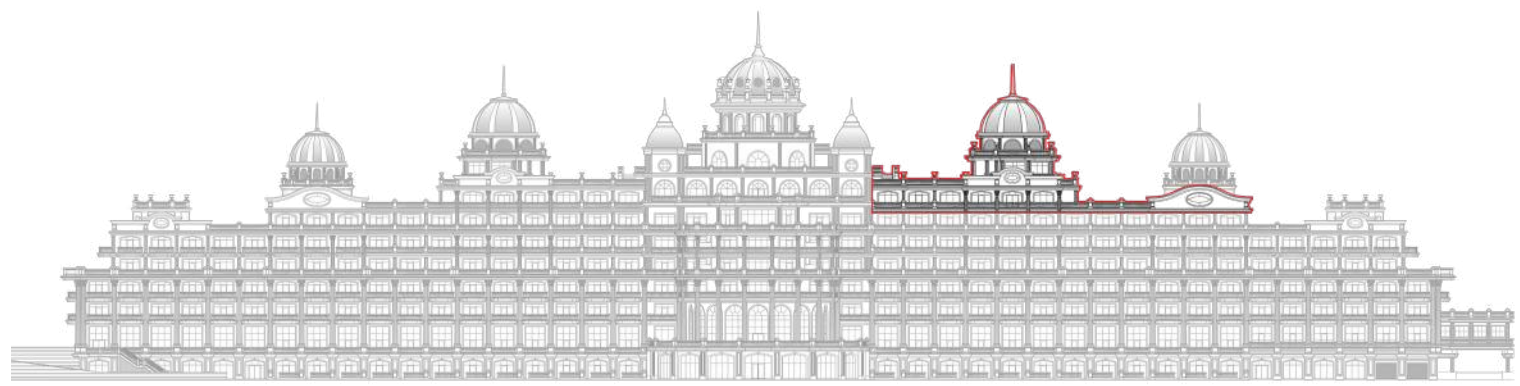
From the moment you enter this four-bedroom home, the ambiance is inviting, welcoming and enveloping, with living areas flowing seamlessly from one to the next.

Covering three floors with a total floor area of 1,158m² and a stunning 1,213m² of terrace space, this majestic four-bedroom simplex penthouse is ambitious in size, style and design.

From the moment you set foot into the palatial foyer and start make your way down the beautiful hall you'll discover a property that screams luxury from every space.

PENTHOUSE 2 AREA

Indoor Living	1,159m ²
Outdoor Living	1,213m ²
TOTAL	2,372m² / 25,534ft²



Penthouse 2 location





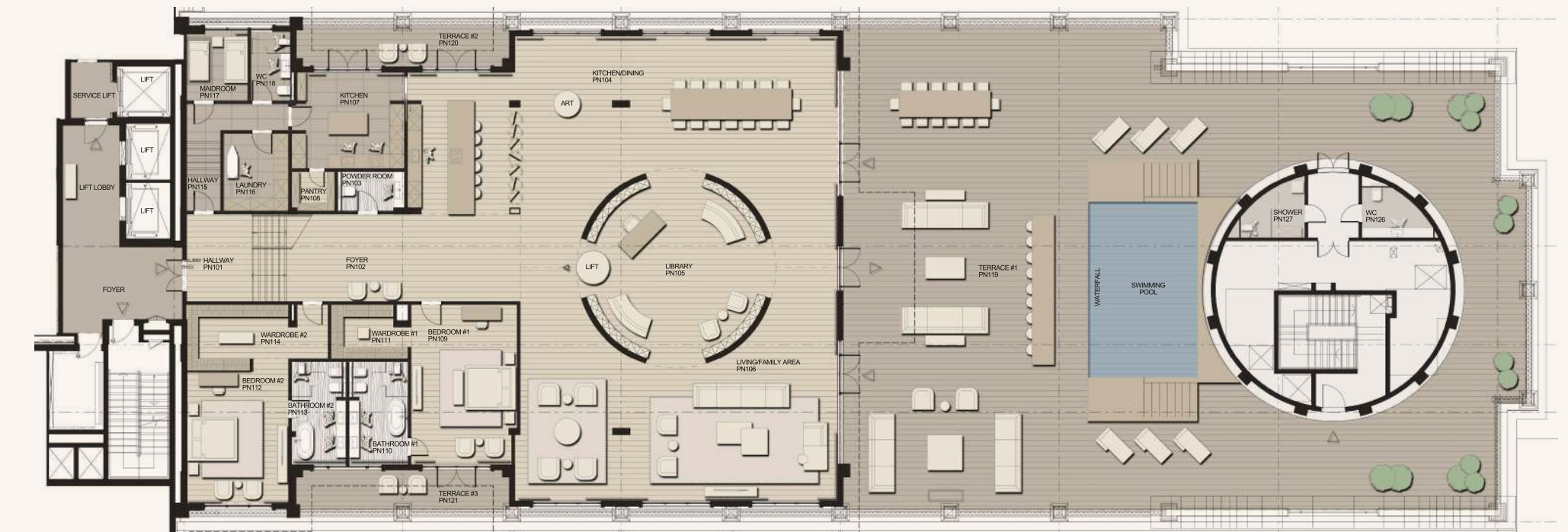
Ultra-modern luxury living

The entrance foyer and hallway, ushers residents into the impressive open-plan living area with a dining space, an impressive circular library and a gourmet kitchen. This central hub opens out onto a private al fresco terrace spanning an impressive 601m² and featuring a seating and dining areas and a waterfall pool. The 6th floor also features two wonderful bedrooms with en-suites and walk-in wardrobes, guest powder room and maid quarters. A bespoke glass lift takes to the upper floors.

6TH FLOOR AREA

Indoor Living	672m ²
Outdoor Living	601m ²
TOTAL	1,273m² / 13,700ft²

Penthouse 2 / 6th Floor





For everything life requires

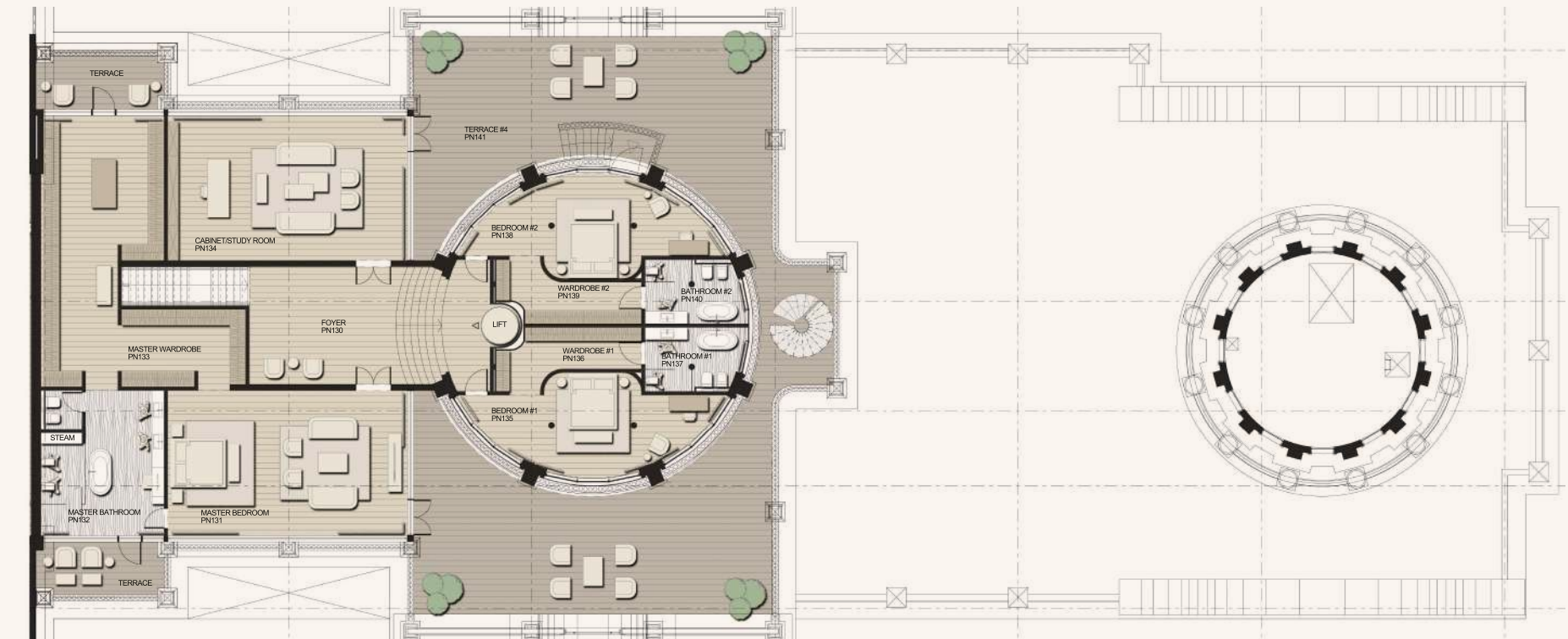
On the 7th floor your lifestyle needs are met with well-designed spaces including a luxury master bedroom suite, with his and hers walk-in wardrobes and an en-suite bathroom.

This floor also features two additional circular bedrooms enveloped by 281m² of terrace space each with en-suites, a spacious study.

7TH FLOOR AREA

Indoor Living	406m ²
Outdoor Living	281m ²
TOTAL	687m² / 7,397ft²

Penthouse 2 / 7th Floor





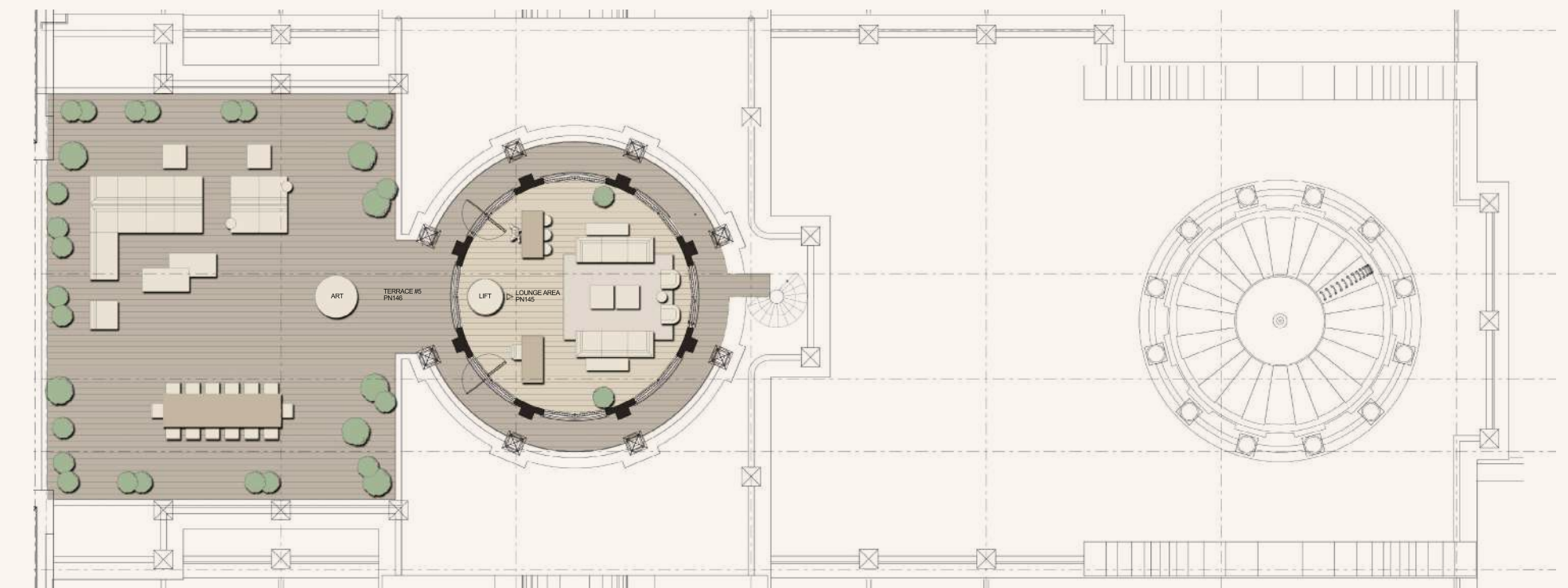
Your new home for luxury living

The 81m² statement circular open-plan 8th floor living space, opens out onto a 331m² private terrace with enough space to relax and dine al fresco in ultimate luxury. Sitting in the palatial towers of Raffles you'll have stunning views across the Arabian gulf and the The Palm Jumeirah.

8TH FLOOR AREA

Indoor Living	81m ²
Outdoor Living	331m ²
TOTAL	412m² / 4,437ft²

Penthouse 2 / 8th Floor





RAFFLES

RESIDENCES & PENTHOUSES
THE PALM DUBAI

PENTHOUSE

3

Penthouse 3

An ultra-luxury penthouse apartment with private pool at a legendary Palm Jumeirah resort.

A sight to behold, this outstanding 1,121m² six-bedroom triplex penthouse spans three vast floors. This ultra-contemporary designer residence, with a real sense of grandeur.

Effortlessly, it can transform itself from a tranquil retreat from the world, to the perfect venue for hosting friends and loved ones.

Crafted by YODEZEEN Architectural and Interior Design Studio, this flagship penthouse encapsulates the super-luxurious Raffles way of life.

PENTHOUSE 3 TOTAL AREA

Indoor Living	1,122m ²
Outdoor Living	1,213m ²
TOTAL	2,335m² / 23,939ft²



Penthouse 3 location





Effortless opulence

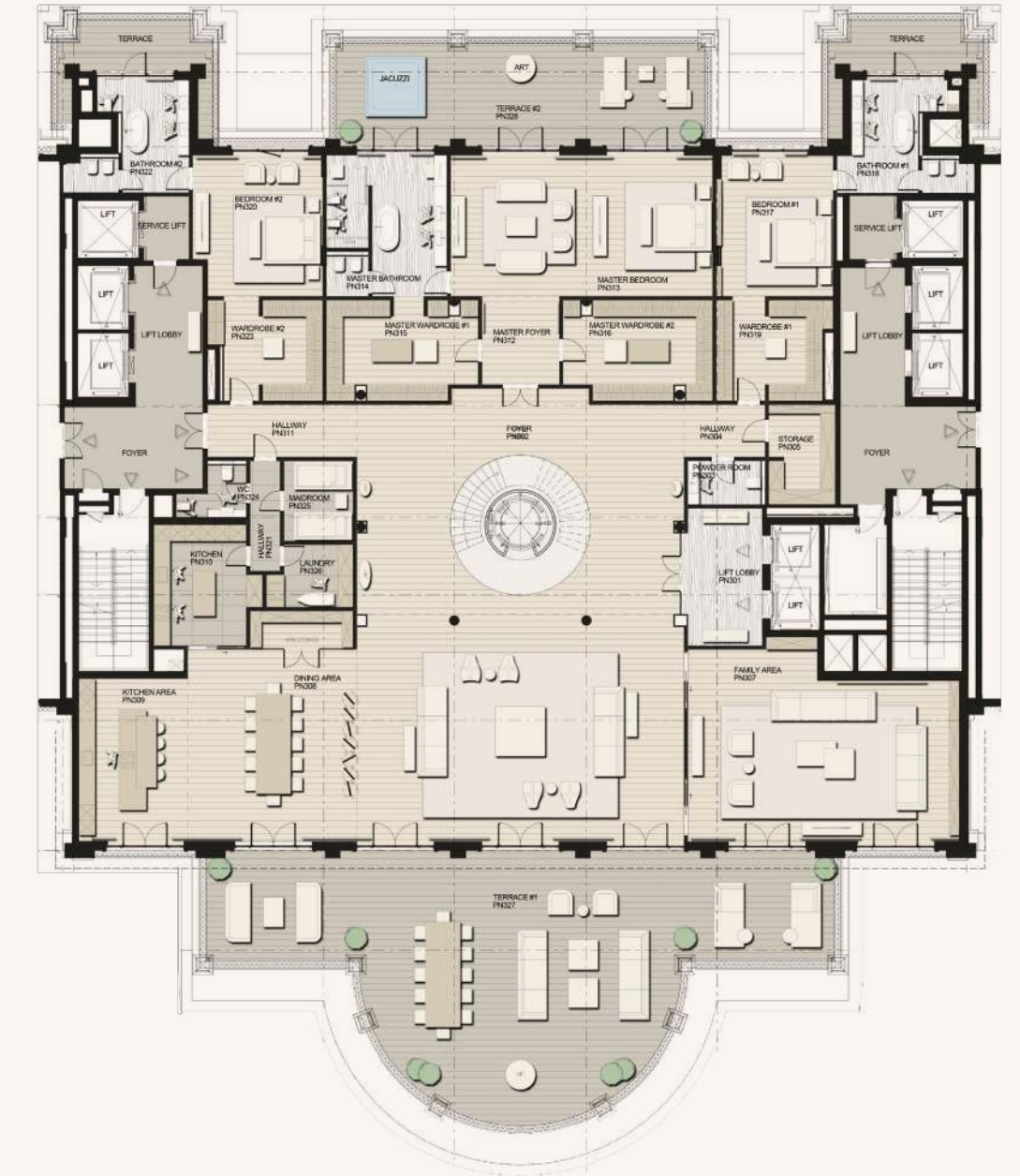
Centred on an incredible spiral staircase the 821m² 6th floor features everything you could wish for. A stunning open plan living area, with dining and a designer kitchen, opens onto a 291m² terrace with exclusive views across The Palm Jumeirah. The unforgettable master bedroom suite features dual walk-in wardrobes, a sitting room, en-suite bathroom and an large private terrace with a Jacuzzi. In addition, there are two further fully featured bedrooms with walk-in wardrobes and en-suites, a generous family room and maid's quarters.

This one-of-a-kind penthouse features private elevators to ensure privacy and peace of mind.

6TH FLOOR AREA

Indoor Living	821m ²
Outdoor Living	291m ²
TOTAL	1,112m² / 11,973ft²

Penthouse 3 / 6th Floor





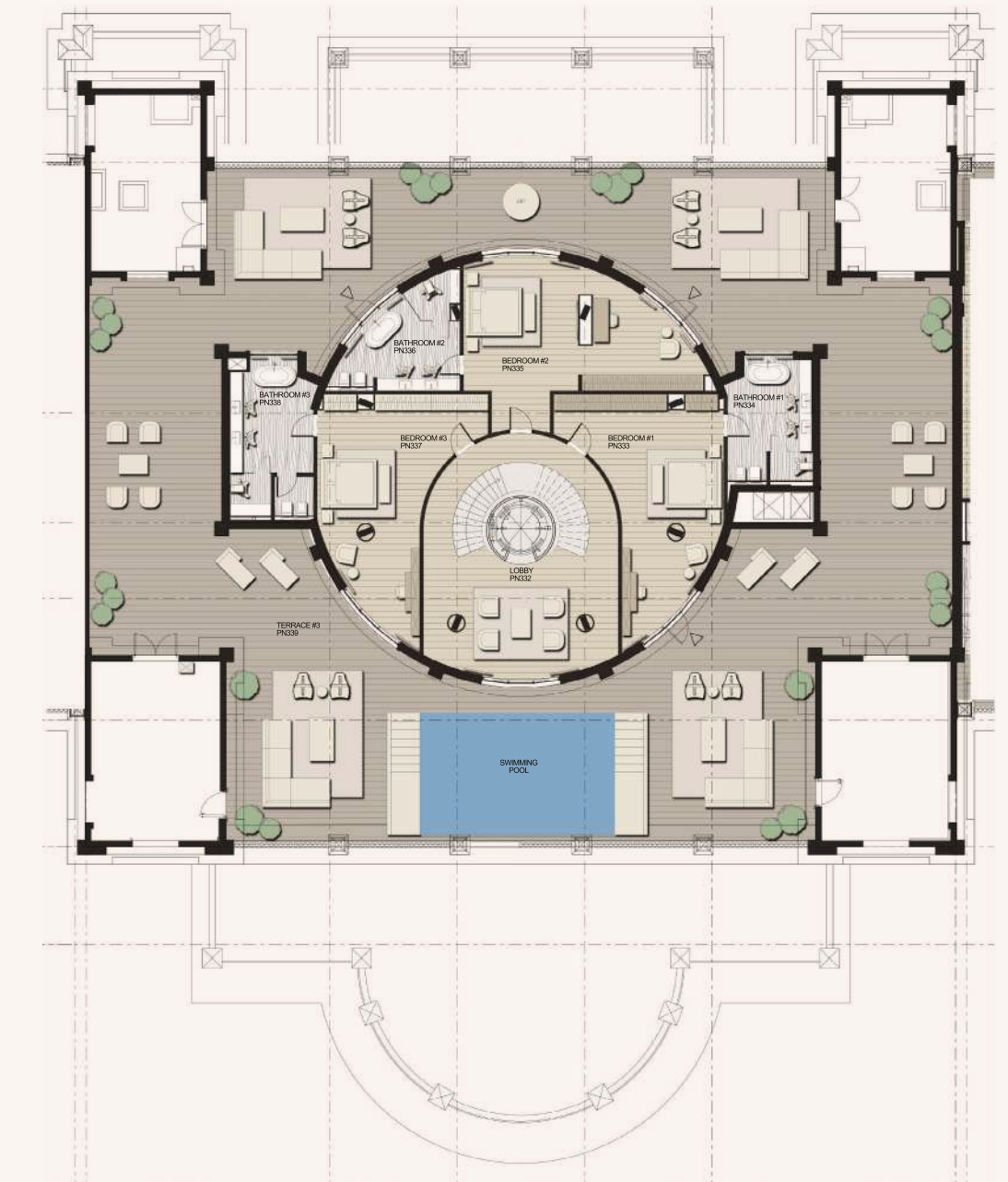
Truly bespoke living

Ascending from the 6th floor via the grand spiral staircase to the 7th floor, another 575m² private terrace awaits. Here you can't help but indulge in panoramic views of the beautiful azure Arabian Gulf waters. This floor features a private swimming pool, where you can relax and enjoy the unsurpassed outlook. The terrace wraps around a spacious lobby with seating area, and also on this floor are found three well-sized, beautifully-appointed bedrooms, each with their own luxurious en-suite bathroom.

7TH FLOOR AREA

Indoor Living	287m ²
Outdoor Living	575m ²
TOTAL	862m² / 9,280ft²

Penthouse 3 / 7th Floor





Beyond imagination

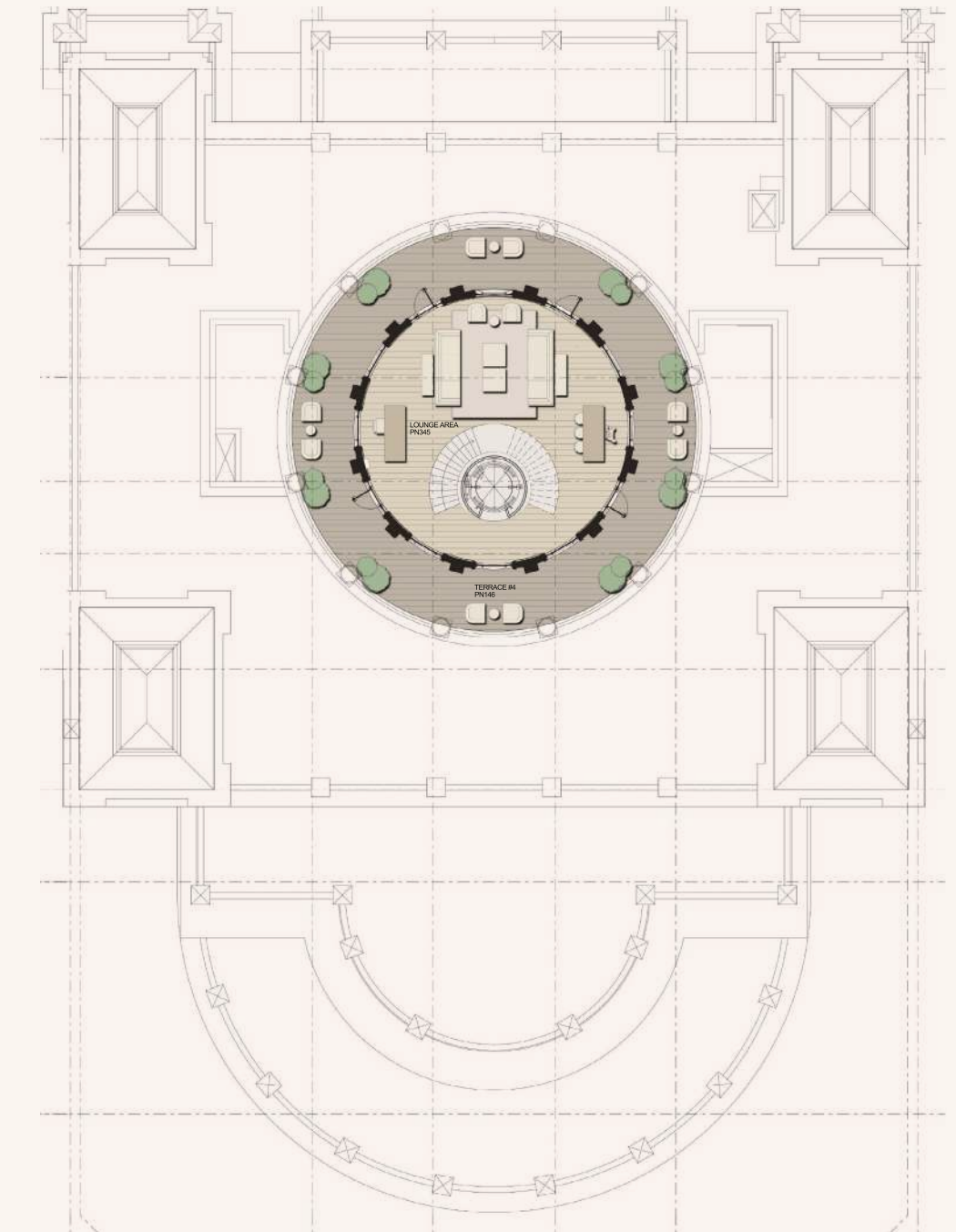
The 8th floor sits proudly at the pinnacle of Raffles The Palm. With a 360-degree circular rooftop terrace featuring lavish landscaping, a bar, lounge area and alfresco dining space shared across a huge 140m².

This is undoubtedly a home that manages to achieve something truly special with a real sense of grandeur.

8TH FLOOR AREA

Indoor Living	110m ²
Outdoor Living	140m ²
TOTAL	250m² / 2,686ft²

Penthouse 3 / 8th Floor





RAFFLES

RESIDENCES & PENTHOUSES
THE PALM DUBAI

RESIDENCE

1

Residence 1

Become immersed in modern palatial elegance at an exclusive waterfront address.

This beautiful 1,003m² five-bedroom luxury residence with a breath-taking terrace offers incredible living for the most discerning of home owners and a wonderful opportunity for intelligent investors.

Enter into a spacious and welcoming hall that leads through to an open-plan living, dining and kitchen area that's truly inspiring.

The experts at YODEZEEN Architectural and Interior Design Studio have masterfully prepared a space that echoes the super-luxurious Raffles way of life.

RESIDENCE 1 TOTAL AREA

Indoor Living	745m ²
Outdoor Living	258m ²
TOTAL	1,003m² / 10,799ft²



Residence 1 location



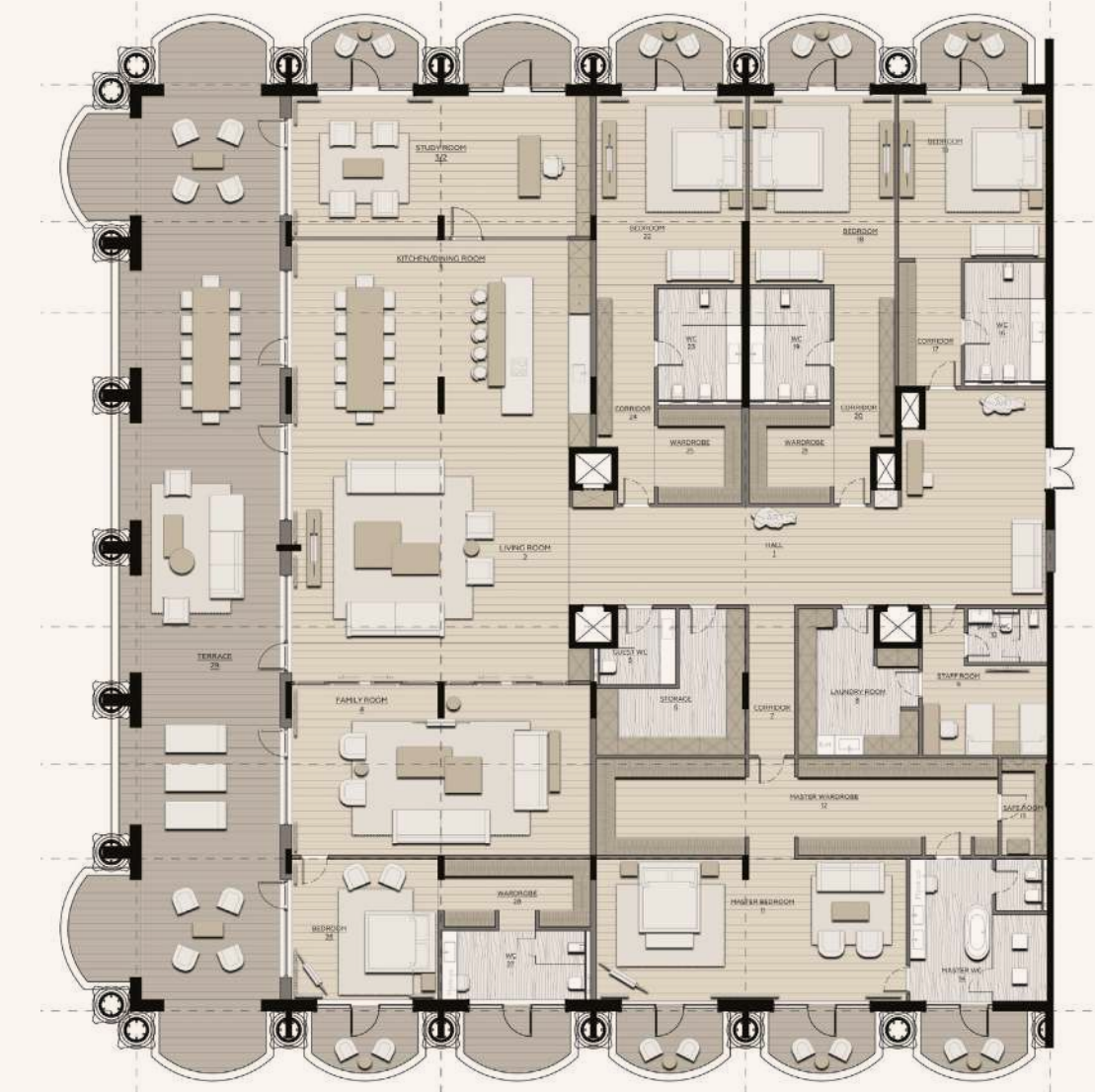


Bespoke living, curated by you

With a terrace that runs the length of the entire (east?) side of the residence and intimate outdoor spaces that extend from all four bedrooms and the study room, this opulent abode fully capitalises on the stunning views across the Arabian Gulf. All bedrooms come with en-suites and walk-in wardrobes. This incredible home also features a powder room for guests, maid quarters and a safe room.

We will work alongside you to perfect the design features, furnishings, colour-ways and finishings in the way that matches your individual tastes. No stone remains unturned in the pursuit of perfection.

Residence 1







RAFFLES

RESIDENCES & PENTHOUSES
THE PALM DUBAI

RESIDENCE

2

Residence 2

A testament to the palatial elegance in one of the most beautiful coastal locations on earth.

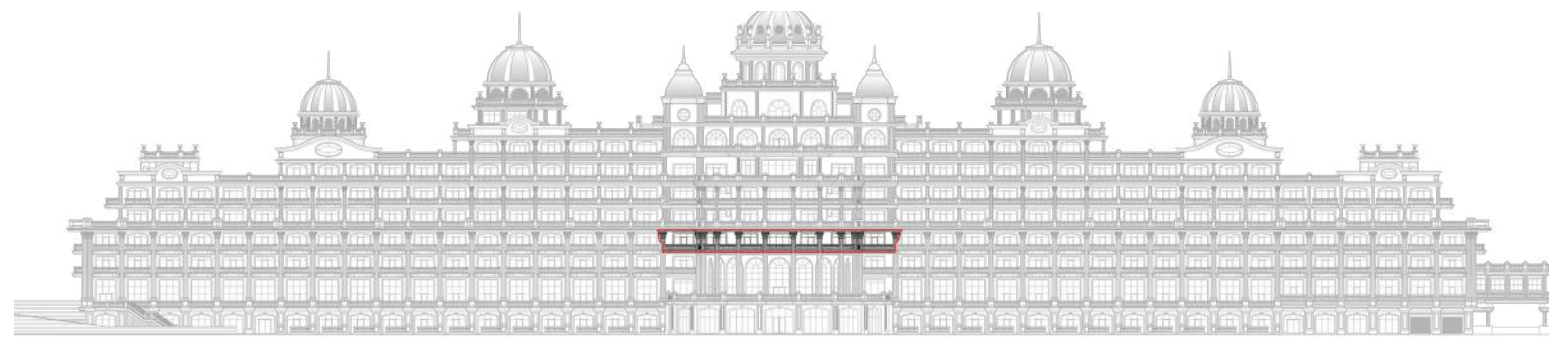
From the moment you step foot inside the extraordinary 3 bedroom residence, a world of ultra-luxury living opens up in front of you over a generous 450m² of space.

The regal hall opens onto the communal living spaces of dining room, living room and kitchen. From every millimetre of space, you can take in the jaw-dropping views for which this location is renowned.

Step out onto the 208m² oval terrace – with a variety of seating and entertaining spaces – and be struck by the sheer wonder of the beauty before you.

RESIDENCE 2 TOTAL AREA

Indoor Living	451m ²
Outdoor Living	208m ²
TOTAL	659m² / 7,096ft²



Residence 2 location





A redefinition of living

Inside, the splendour of the architecture, design, finishings and colour-ways matches the beauty of the natural external vista.

Working alongside you, our experts will perfect every aspect of the vast master suite, complete with large walk-in wardrobe, luxuriously appointed en-suite and private seating area, as well as the further two fully featured bedrooms. A staff bedroom, laundry, powder room and private office complete the floor-plan of this truly extraordinary dwelling.

Residence 2







RAFFLES

RESIDENCES & PENTHOUSES
THE PALM DUBAI

RESIDENCE

3

Residence 3

A place for you set amongst one the most luxurious and refined beach-side locations on earth.

An extraordinary 745m² residence that commands a vast footprint and embellishes every millimetre with a level of precision that's truly astounding.

A heart-quickenning hall flows seamlessly into truly astonishing living spaces that encompass a state-of-the-art kitchen, opulent dining area and gorgeous living room, all finished to the highest ultra-contemporary standards.

Outside, the vast 258m² terrace with its peerless views across the Arabian Gulf features generous living areas and a stunning dining space that demands to be enjoyed.

RESIDENCE 3 TOTAL AREA

Indoor Living	745m ²
Outdoor Living	258m ²
TOTAL	1,003m² / 10,799ft²



Residence 3 location





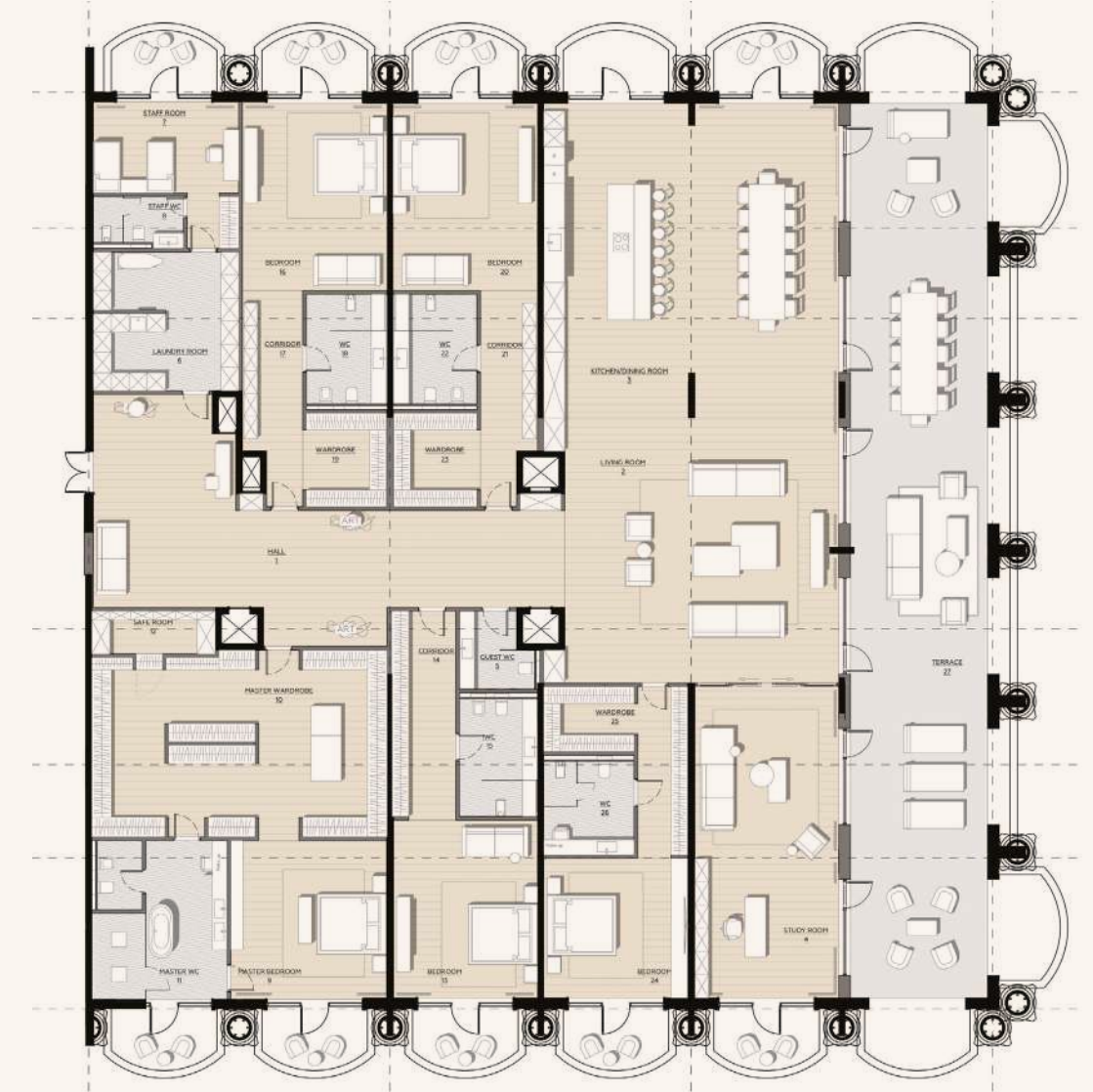
*A sumptuous abode,
set in ultra-luxury*

With five beautifully appointed bedrooms and an abundance of living space inside and outside, this is a home that delivers of the hopes and ambitions of even the most discerning of luxury seekers.

Each of the bedrooms – which, like every other aspect of this property will be designed in accordance with your own individual aesthetic – feature generous wardrobes, en-suite and access to their own private terrace space. The magnificent master bedroom features a master wardrobe and an additional terrace space leading out from its impressively appointed bathroom.

This home is finished with a fully featured maid's quarters and a safe room for peace of mind.

Residence 3







RAFFLES

RESIDENCES & PENTHOUSES
THE PALM DUBAI

RESIDENCE

4

Residence 4

An opulent oasis of ultra-modern luxury design located in the home of the world's most iconic purveyors of luxury service.

The architectural highlights of this incredible 522m² five-bedroom residence at Raffles The Palm Dubai are endless.

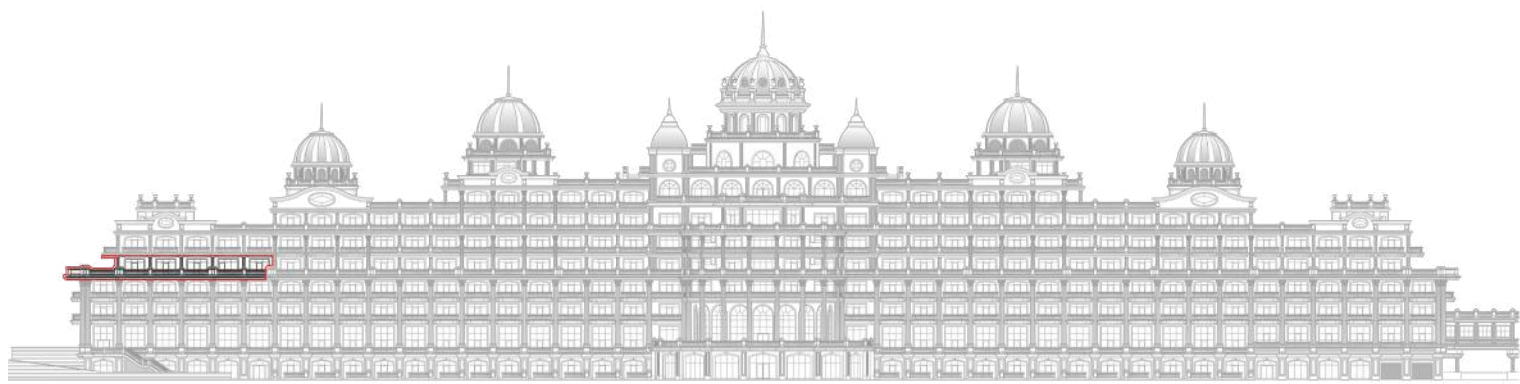
An astounding 547m² wrap-round terrace envelops the residence giving you extraordinary panoramic views over Dubai and the Gulf.

This beautiful residence harnesses all the glamour and masterful contemporary

design thinking of one of the world's most desirable locations and infuses it into an abundant home, perfect for those who understand the world of ultra-luxury.

RESIDENCE 4 TOTAL AREA

Indoor Living	522m ²
Outdoor Living	547m ²
TOTAL	1,069m² / 11,512ft²



Residence 4 location





Ultra-luxury, bespoke to you

With an ergonomically perfect open-plan living, kitchen, dining area featuring cutting-edge appliances and handcrafted furnishings from the world's most talented creators, this is a space made to be enjoyed.

A grand and handsome master bedroom features an oversized en-suite and walk-in wardrobe, while four other fully-featured bedrooms have immediate access to the outside terrace. The terrace itself features large dining space – perfect for entertaining – several seating and relaxing areas and an awe-inspiring private swimming pool.

This wonderful palatial home is completed with maid's quarters, laundry and guest powderroom.

Residence 4







RAFFLES

RESIDENCES & PENTHOUSES
THE PALM DUBAI

RESIDENCE

5

Residence 5

An elegant escape from the world, a cocoon of ultra-luxury, located in one of the most beautiful beach-front locations imaginable.

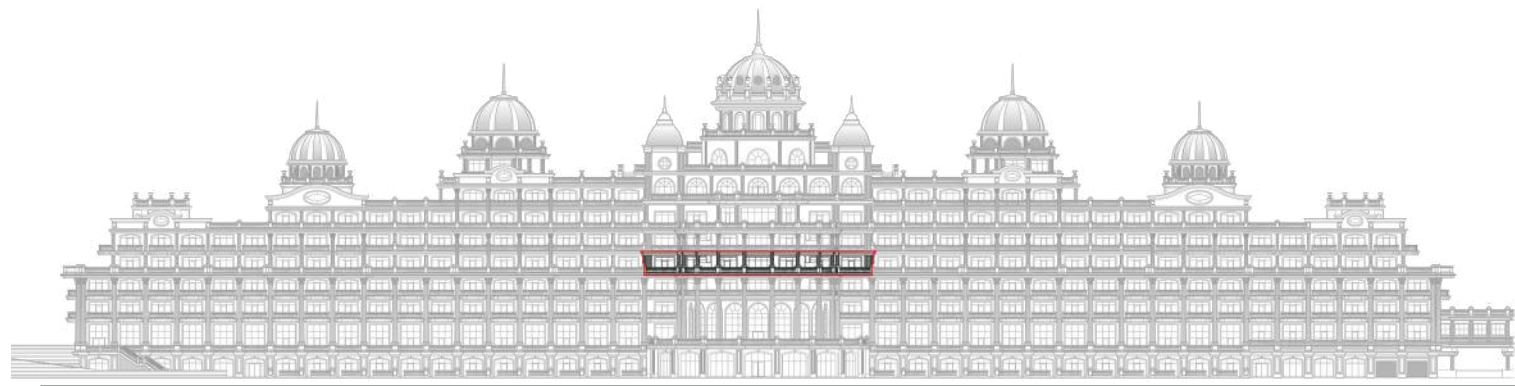
Elegantly appointed with bespoke décor and furnishings in keeping with the resort's luxury aesthetic, this 468m² three-bedroom haven of bliss is a sought-after Palm Jumeirah residence.

With sophisticated design enhanced by high-end finishings that blend rich textures and tones, this is an urban sanctuary to excite the senses.

The residence is finished with remarkable views from the 215m² of terrace areas out across the grounds and to the Gulf.

RESIDENCE 5 TOTAL AREA

Indoor Living	468m ²
Outdoor Living	215m ²
TOTAL	683m² / 7,354ft²



Residence 5 location





Ultimate indulgence, as standard

This carefully curated ultra-luxury, contemporary residence boasts three spacious, serene bedrooms prepared by the world's finest contemporary designers and using only the very best materials, each of them with incredible en-suites and walk-in wardrobes.

The open plan living, kitchen and dining area is a joy to behold and to be in. A glass-fronted study, guest powder room, laundry and maid's quarters ensure every eventuality is covered.

Outside, the incredible oval-shaped balcony has ample space for relaxing, dining and even its own jacuzzi.

Residence 5







RAFFLES

RESIDENCES & PENTHOUSES
THE PALM DUBAI

RESIDENCE

6

Residence 6

An incredible five-bedroom residence with enormous terrace located within the jewel of the Palm Jumeirah.

This refined and elegant 522m² five-bedroom residence features everything you expect from a property that bears the Raffles name.

It is encased magnificently by an outstandingly impressive 547m² wrap-around outdoor terrace featuring luxuriant spaces to relax and it's own incredible private pool.

Sitting around the edge of Raffles The Palm gives this stunning residence unparalleled views across the city and the Arabian gulf.

RESIDENCE 6 TOTAL AREA

Indoor Living	522m ²
Outdoor Living	547m ²
TOTAL	1,069m² / 11,512ft²



Residence 6 location





A bespoke space, for a bespoke life

Meticulously created by industry-leading craftsmen, this property boasts the highest of high-end finishings and fastidious attention to detail which elevates the contemporary open-plan living standards to a level beyond opulent.

It's enhanced by a well-designed layout that is both spacious and inviting, creating an atmosphere of indulgence. From the bedrooms – with ensuite, walk-in wardrobes and direct access to the terrace – to the stylish and sophisticated living, kitchen, dining areas, every inch of this property communicates elegance, extravagance and enjoyment. Completed with a guest powder room, laundry and fully-featured maid's quarters.

Residence 6







RAFFLES

RESIDENCES & PENTHOUSES
THE PALM DUBAI

RESIDENCE



Residence 7

Unparalleled opulence from the brand who originally defined luxury service. Much more than a home, this is a showcase of luxury living.

An aspiration for every other residence in the world, this incredible property has been painstakingly put together by the world's most particular craftspeople, for the world's most discerning property buyers.

Featuring a stunning open plan living area – surrounded by private balconies – which opens out into a large terrace looking out across The Palm.

A total of 617m² of refined living in one of the world's most desirable locations.

RESIDENCE 7 TOTAL AREA

Indoor Living	523m ²
Outdoor Living	94.m ²
TOTAL	617m² / 6,640ft²



Residence 7 location





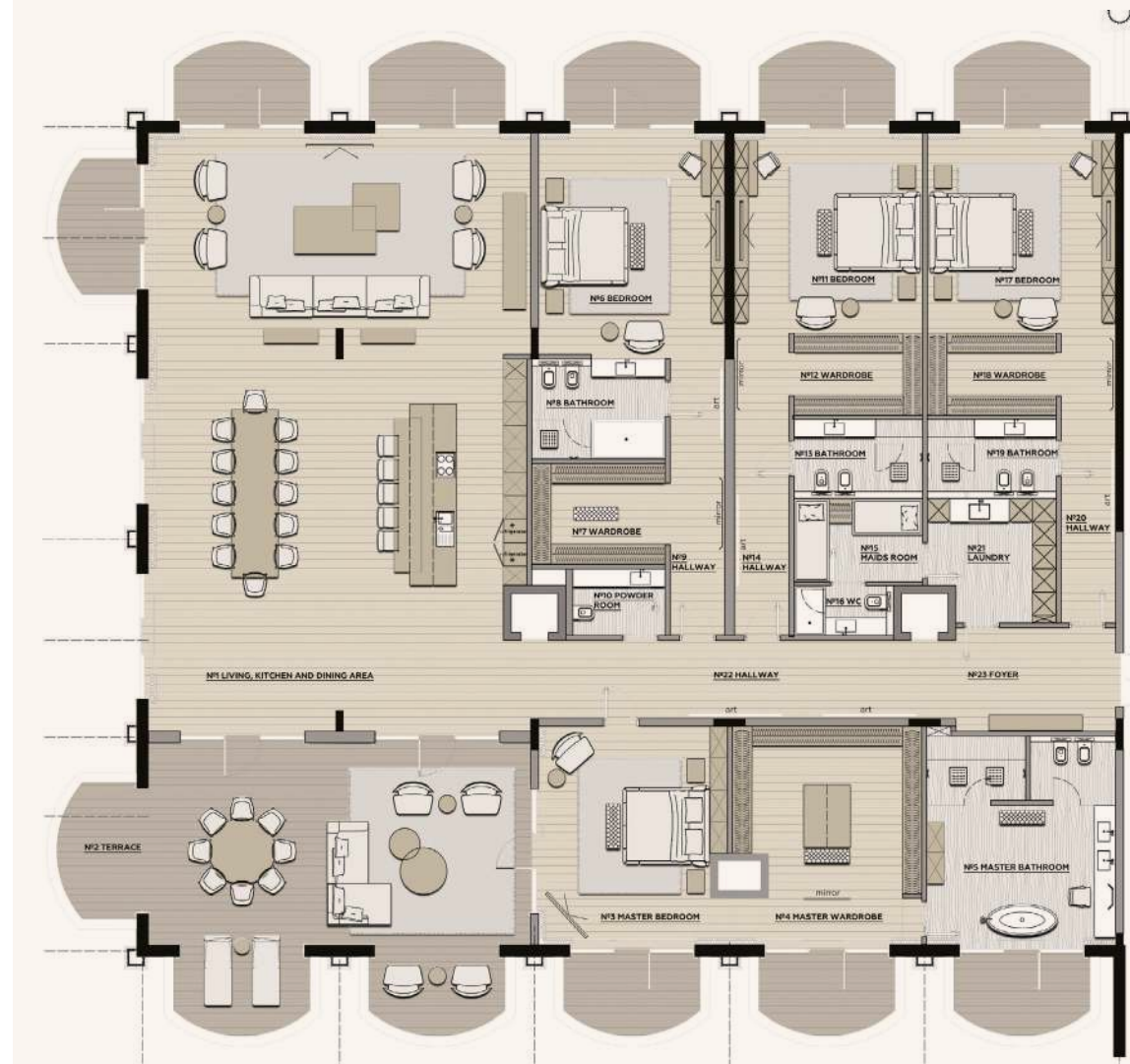
Your own unique luxury

From the stunning hallway are four beautifully-appointed bedrooms all with luxurious en-suite facilities, including a spectacular master, all with their own personal balconies.

Opening out into a super stylish and highly contemporary open-plan kitchen, living, dining area with meticulous attention-to-detail across every aspect of this wonderful abode. Completed with a guest powder room, laundry and maid's quarters.

Not to mention, the location at one of the world's most luxurious hotels and a level of service that's unsurpassed.

Residence 7







RAFFLES

RESIDENCES & PENTHOUSES
THE PALM DUBAI

RESIDENCE



Residence 8

A palatial residence for those who understand the value of all-encompassing luxury. Wonderfully located at The Palm Jumeriah, the offshore destination of distinction.

When you know what it takes to achieve something incredible, you know the second you set eyes on it.

Standing proud in the centre of Raffles The Palm, this residence looks out over the lush gardens, private beach and over the Palm towards the city.

This wonderful abode, spread across of 559m² indoor living and a 185m²

statement oval terrace, is a celebration of what happens when the wonder of imagination and the skill of true artisans combine.

RESIDENCE 8 TOTAL AREA

Indoor Living	559m ²
Outdoor Living	185m ²
TOTAL	744m² / 8,011ft²



Residence 8 location





An all-encompassing sense of luxury

More than an apartment, this is a holistic luxury experience. A generous foyer, with guest powder room, leads to an open-plan contemporary living space with a state-of-the-art kitchen, living area and made-to-be-shared dining area.

The extraordinary master suite with walk-in wardrobe and opulent bathroom is the perfect place to relax in ultimate opulence. Three additional luxurious bedrooms and a perfectly proportioned maid's room – all with en-suite – complete the sleeping quarters.

Outside the terrace offers generous outdoor space and spectacular views across the wonder of the Arabian Gulf.

Residence 8







RAFFLES

RESIDENCES & PENTHOUSES
THE PALM DUBAI

RESIDENCE

9

Residence 9

An abode reserved for those who know what it means to experience ultra-luxury living. Beautifully positioned, with all the facilities of one of the world's finest hotels.

The most exquisitely appointed and meticulously arranged home one could imagine. Sitting on the edge of Raffle The Palm, the grand terrace gives you expansive views across Dubai and the Arabian Gulf and an unrivalled sense of peace.

From the sleek and contemporary lines of the vast open spaces, from the hallway to the kitchen, and the living space to the dining area, everything

in this wonderful 523m² residence has a purpose – and that purpose is to achieve the most refined and exclusive living imaginable.

RESIDENCE 9 TOTAL AREA

Indoor Living	523m ²
Outdoor Living	94m ²
TOTAL	617m² / 6,637ft²



Residence 3 location





A home in which to savour every moment

When you are situated beach-side, part of one of the man-made wonders of the world, it feels only right that every room offers a beautiful blend of indoor/outdoor living, with a break-taking master suite, complete with bathroom, wardrobe and luxurious bedroom which all have access to their own private balconies. Featuring a further three luxuriously appointed bedrooms, all with en-suite and walk-in wardrobes, a maid's room, laundry and guest powder room this truly has everything you could desire.

The open-plan, ultra-modern communal living areas have been put together by world-leading experts to maximise every inch and invoke an emotional response from everyone who's fortunate enough to dwell within.

Residence 9







RAFFLES

RESIDENCES & PENTHOUSES
THE PALM DUBAI

RESIDENCE

10

Residence 10

An extraordinary achievement – the combination of the world's finest interior designers and craftspeople, and the home of the world's finest example of luxury service.

It's difficult to know whether to begin describing the inside of this incredible five bedroom home, or the outside. Because no matter where you start, the effortless, elegant touches of supreme luxury are evident to all.

This example of residential perfection is ready to be shared with someone who understand what the term ultra-luxury means and is ready to live it every day.

From the astounding 596m² of indoor living to the extraordinary 758m² terrace area, this is a property like no other.

RESIDENCE 10 TOTAL AREA

Indoor Living	596m ²
Outdoor Living	758m ²
TOTAL	1,354m² / 14,573ft²



Residence 10 location





Precision that appears effortless

Featuring two terraces – one with an private pool and the other offering sacred seclusion, this property is surrounded by opulence cues. Inside, the welcoming lobby leads to beautifully proportioned and appointed modern, open-plan kitchen, dining and living areas. The generously sized master suite comprises the grand bedroom, beautiful bathroom and wardrobe and dressing room. All bedrooms are wonderfully proportioned and expertly designed, and have direct access to the terrace. There's a study for work and quiet contemplation and a maid's room and laundry complete the picture.

Residence 10







RAFFLES

RESIDENCES & PENTHOUSES
THE PALM DUBAI

RESIDENCE

11

Residence 11

When you've experienced the technicolour wonder of ultra-luxury, everything else seems dull in comparison. This is living in full colour.

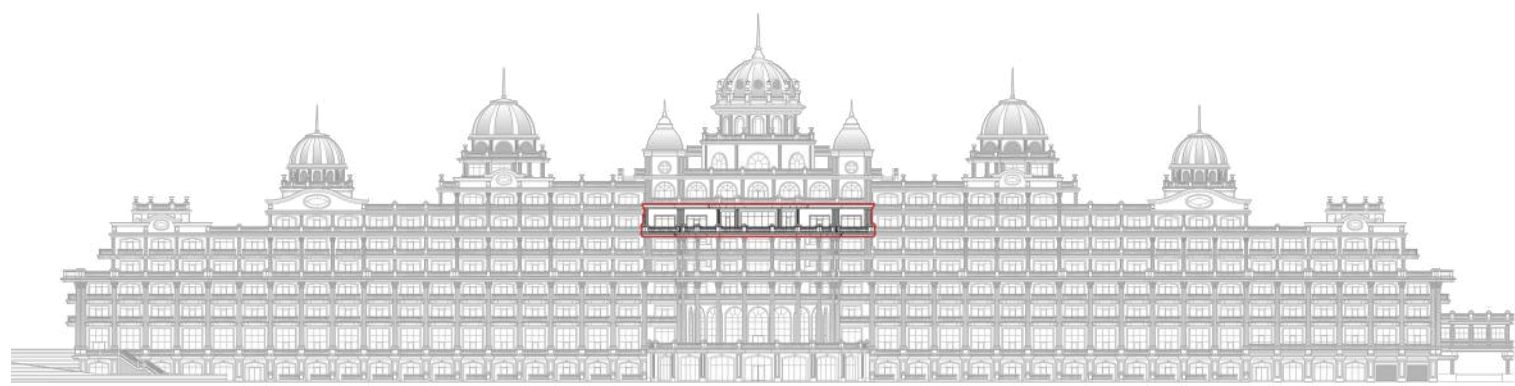
Sometimes the most challenging part of creating a beautiful beach-side property is achieving an interior that lives up to the view.

In this 751m² apartment of unimaginable opulence the world leading design team have achieved just that.

A space that celebrates and accentuates the spectacular splendour of The Palm Jumeriah.

RESIDENCE 11 TOTAL AREA

Indoor Living	537m ²
Outdoor Living	214m ²
TOTAL	751m² / 8,081ft²



Residence 11 location





Achieve your vision of supreme luxury

A lobby with guest powder room leads to the luxuriously appointed open-plan kitchen, living and dining areas which are true achievements in contemporary design. The living area leads invitingly out into the magnificent 214m² oval terrace, with its uninterrupted views across the enchanting waters of the Arabian Gulf.

With a vast master suite, featuring an opulent bedroom, wonderful bathroom and separate his & hers walk-in wardrobes, this is a place you can truly unwind. Three further bedrooms with en-suite and wardrobes – two with private balconies – plus a generous maid room and laundry all contribute to the sense of space and wonder.

Residence 10







RAFFLES
RESIDENCES & PENTHOUSES
THE PALM DUBAI

RESIDENCE

12

Residence 12

A stunning six-bedroom property that captures the very essence of opulence, located in the most wonderful of settings.

This prodigious palatial dwelling epitomises everything Raffles stands for. An aura of luxury created by the colossal 1,347m² dimensions, a feeling of homeliness from the sumptuous finishes, and a sense of true luxury from the overt attention to even the most minuscule of details.

The very best artisans in the world were charged with creating a living space that does justice to the reputation of one of the world's finest hotels.

The 589m² contemporary open-plan living and dining area, featuring a designer kitchen, is fitted with the finest hand-selected furniture, furnishings and appliances.

RESIDENCE 12 TOTAL AREA

Indoor Living	589m ²
Outdoor Living	758m ²
TOTAL	1,347m² / 14,505ft²



Residence 12 location





Suddenly, all else pales in comparison

The master suite, which with its immense proportions is a triumph, features a bathroom and walk-in wardrobe. Four further bedrooms, all with en-suite and wardrobes, a glass-fronted study and a maid's room with laundry, complete the incredible residence. Outside, two separate terraces covering 758m² offer uninterrupted views across the Arabian Gulf and the private swimming becomes a focal point around which to gather to relax. A home that exceeds expectations, and sets new ones.

Residence 12







A La Carte Services

Babysitter Service
Butler Service
Car Cleaning & Detailing
Florist
Hairdresser
Housekeeping Services
Limo Services
Manicure – Pedicure
Personal Shopper
Pet Care
Private Chef
Private Doctor
Private Driver
Private Event Planner
Private Security
Private Sommelier
Private Trainer
Laundry & Dry Cleaning

Services

24H Maintenance
24H Security
Buggy Service
Club Lounge
Concierge Services
Doorman
High-Speed Internet
Raffles In Room Residence Dining
Refrigerated Holding Area
Turn Down Service
Valet Service
Watersports





Facilities

-
- 25M Indoor Swimming Pool
 - Ballroom
 - Beach Club & Restaurant
 - Beach Volley
 - Cinq Monde Spa (5.000Sqm)
 - Japanese Restaurant
 - Exhibition Floor
 - Perla Bath
 - Jazz Bar
 - Mini Golf
 - Overflow Pool
 - Private Beach (500m)
 - Private Cinema
 - Private Elevators to Penthouse
 - Private Garage for Villas
 - Private Pool & Jacuzzi
 - Raffles Kids Club
 - State of the Art Gym
 - Yoga Studio
-

Bespoke Lighting

Befitting such opulent surroundings, we have curated a list of the very best artisans to create the lighting in our residences. Unique, luxurious pieces crafted to the very highest specifications. And chosen by you to ensure your home is exactly as you imagined.

BOCCI

CHRISTOPHER BOOTS



GABRIEL SCOTT
EST 2012



MARKUS HAASE STUDIO

PRECIOSA

Roll & Hill


SANTA & COLE

Custom Kitchens & Appliances



Raffles has tailored a selection of world renowned kitchen design specialists and appliance manufacturers who will work in partnership with you to create opulent and functional spaces to suit your every need.

Dada

Poliform

Miele

GAGGENAU

Designer Furniture

A storied list of the finest furniture creators in the world are on hand to ensure every aspect of your home is filled with pieces of outstanding quality and comfort. Every artwork, every colour chosen to reflect your desires.

B&B
ITALIA

Casamilano

cattelan
italia

GIORGETTI 

HENGE[®]

Minotti

TURRI[®]
The Italian way to beauty


OPERA
CONTEMPORARY


Poltrona
Frau
1912

HOME PHILOSOPHY
visionnaire

Yael GOLDENBERG



RAFFLES

RESIDENCES & PENTHOUSES
THE PALM DUBAI

